



Edwards

Rx only

Edwards Reusable Accessories

Reusable Platform (Model 10000UP), Reusable Plate (Model 10000PT), and Reusable Cradle (Model 10000CR)

Instructions for Use

1.0 Introduction

The Edwards reusable platform, reusable plate, and reusable cradle are reusable, non-sterile accessories indicated for use with compatible Edwards transcatheter cardiac therapies. The reusable platform and reusable plate are non-patient contacting and are intended to aid the positioning and stabilization of delivery systems during intra-cardiac procedures. The reusable platform is height and angle adjustable to accommodate the procedural needs for each system (see Figure 1). The reusable cradle is non-patient contacting and is intended to aid the positioning and stabilization of delivery systems during intra-cardiac procedures (see Figure 1).

The Edwards reusable platform, reusable plate, and reusable cradle are intended to be used in a cardiac procedure room (e.g. catheterization laboratory, hybrid room, etc.).

The Edwards reusable platform, reusable plate, and reusable cradle are intended to be used by physicians and support staff trained to these instructions for use.

2.0 Intended Use

The reusable platform is intended to aid the positioning and stabilization of delivery systems during intra-cardiac procedures.

The reusable plate is intended to aid the positioning and stabilization of delivery systems during intra-cardiac procedures.

The reusable cradle is intended to aid the positioning and stabilization of delivery systems during intra-cardiac procedures.

3.0 Cautions

Read all indications and precautions in these Instructions for Use before using the reusable platform, reusable plate, and reusable cradle. The Instructions for Use is available electronically, via www.eifu.edwards.com. You may also request a copy by calling Edwards Headquarters at +1.888.570.4016 or by contacting your local clinical representative.

The reusable platform, reusable plate, and reusable cradle are NON-STERILE; introduction of the reusable platform, reusable plate, and reusable cradle into the sterile field may result in infection. Prior to use, cleaning must be performed according to the instructions provided in this document (see Sections 7.3 and 7.4).

Do not use metallic brushes, scrub pads, or other abrasive cleaning aids when cleaning the devices. They can cause permanent device damage.

4.0 Limitations on Reprocessing

Proper reprocessing has a minimal effect on the devices.

End of life is normally determined by wear and damage due to use (see Section 7.5 for inspection instructions). Do not use the devices if they are damaged.

These reprocessing instructions have been validated as being capable of preparing the reusable platform, reusable plate, and reusable cradle for non-sterile procedural use. It is the responsibility of the user/hospital/health care provider to ensure that reprocessing is performed using the appropriate equipment and materials, and that personnel have been adequately trained to the reprocessing instructions in order to achieve the desired result; this normally requires that equipment and processes are validated and routinely monitored. Any deviation by the user/hospital/health care provider from these instructions should be evaluated for effectiveness to avoid potential adverse consequences.

5.0 How Supplied




The reusable platform, reusable plate, and reusable cradle are supplied non-sterile.

The reusable platform, reusable plate, and reusable cradle require no assembly or disassembly for procedural use, cleaning, or storage.

6.0 Directions for Use

6.1 Preparation

Prior to use, cleaning must be performed according to the instructions provided in this document (see Sections 7.3 and 7.4).

Step	Procedure
1	Place reusable platform on a flat surface with the top of the platform facing down. 
2	Unfold the reusable platform's legs until there are audible clicks. 
3	Flip reusable platform with the top of the platform facing up. Ensure that leg extension knobs are facing user. 
4	Adjust platform height using the leg extension knobs to ensure clearance between the patient's wrapped legs and the bottom of the reusable platform.

6.2 Use

Step	Procedure
1	Wrap the patient's legs with towels or similar material.
2	Place the reusable plate under the patient's legs.

Step	Procedure
3	Place the reusable platform over the patient's leg and on top of the reusable plate according to the compatible system IFU and ensure that the leg extension knobs are facing user.
4	Adjust platform height and/or tilt angle as needed according to the compatible system IFU by rotating the leg extension knobs.
5	Place the reusable cradle on the reusable platform according to the compatible system IFU. Push down on the clip until there is an audible click (see Figure 2).

7.0 Reprocessing Instructions

7.1 Equipment and Materials

Wear appropriate protective equipment (gloves, eye protection, etc.) when reprocessing the devices.

Use only 70% isopropyl alcohol for cleaning.

Usage of 70% isopropyl alcohol for cleaning should be consistent with the manufacturer's instructions for use.

7.2 Preparation before processing

Step	Procedure
1	Place the reusable platform, reusable plate, and reusable cradle separately on a flat surface.
2	Ensure the reusable platform legs are unfolded prior to cleaning. Rotate the leg extension knobs clockwise to fully extend both sets of leg extensions (see Figure 3).

7.3 Cleaning

Step	Procedure
1	Reprocess devices as soon as reasonably practical after each use and prior to each reuse.
2	Clean the reusable platform, reusable plate, and reusable cradle by wiping with 70% isopropyl alcohol to remove any visible soil. Ensure all exposed surfaces are wiped. Spraying 70% isopropyl alcohol on exposed surfaces is acceptable.
3	Visually inspect devices for any remaining soil in a well-lit environment. If any device is determined not to be clean, repeat the previous cleaning steps or safely dispose of the device.

7.4 Drying

Step	Procedure
1	If devices are still wet, dry the reusable platform, reusable plate, and reusable cradle with a soft, lint-free cloth after confirming that all visible soil is removed.

7.5 Maintenance, inspection, and testing

Step	Procedure
1	Inspect the reusable platform, reusable plate, and reusable cradle for any unremovable biohazardous stains.
2	Inspect the reusable platform to verify the leg extension knobs fully extend and retract the leg extensions.
3	Inspect the reusable platform to verify the legs remain locked when unfolded.
4	Inspect the reusable platform to verify the leg unlock buttons allow the legs to be folded.
5	Inspect the reusable cradle to verify that there is no damage to the clip.
6	Inspect the reusable platform, reusable plate, and reusable cradle for cracking, sharp edges and/or gross damage in a well-lit environment. Ensure any visible damage does not impact functionality. Normal wear and tear is expected due to repeated use.
7	Do not use device(s) if any inspections are unacceptable.

8.0 Storage

Step	Procedure
1	After cleaning and drying (see Sections 7.3 and 7.4), rotate the reusable platform leg extension knobs counterclockwise to fully retract both sets of leg extensions.
2	Press the leg unlock buttons to unlock and fold each set of legs into the bottom of the reusable platform into the storage configuration (see Figure 1).
3	Store the devices in a cool, dry place.

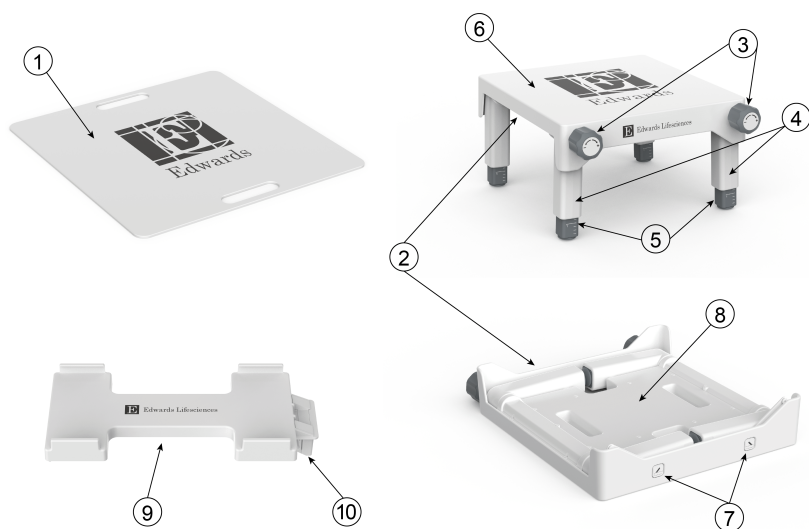
9.0 Device Disposal

Damaged devices may be handled and disposed of in the same manner as hospital waste in accordance with local regulations as there are no special risks related to the disposal of these devices.

10.0 Reporting

Users should report any serious incidents to the manufacturer and the Competent Authority of the Member State in which the user is established.

Figures



1. Reusable Plate
2. Reusable Platform
3. Leg Extension Knobs
4. Legs
5. Leg Extensions
6. Top of the Platform
7. Leg Unlock Buttons
8. Bottom of the Platform
9. Reusable Cradle
10. Clip

Figure 1: Model 10000UP reusable platform, Model 10000PT reusable plate, and Model 10000CR reusable cradle



Figure 2: Model 10000CR reusable cradle assembled on Model 10000UP reusable platform and Model 10000PT reusable plate



Figure 3: Fully extended configuration of Model 10000UP reusable platform

Symbol Legend

	English
	Model Number
	Catalogue Number
	Lot Number
	Quantity
	Contents
	Caution
	Consult instructions for use or consult electronic instructions for use

	English
	Do not use if package is damaged and consult instructions for use
	Store in a cool, dry place
	Medical device
	Consult instructions for use on the website
	Caution: Federal (USA) law restricts this device to sale by or on the order of a physician.
	Non-sterile

	English
	Authorized representative in the European Community/European Union
	Manufacturer
	Date of manufacture
	Unique device identifier
	Importer

Note: The labeling of this product may not contain every symbol depicted in this legend.



Edwards

02/2023

10055142001 A

© Copyright 2023, Edwards Lifesciences LLC

All rights reserved.



Edwards Lifesciences LLC
One Edwards Way
Irvine, CA 92614 USA

Telephone +1.949.250.2500

+1.800.424.3278

FAX +1.949.250.2525

Web IFU